

ALS DIAGNOSIS?

What you need to know about your home.

Brought to you by:



Proud to partner with



DeVol Design.Build.Remodel, LLC

Serving the Greater Cincinnati area.

Accessibility Remodeling: Bathrooms | Kitchens | Home Additions & More

DeVol Design.Build.Remodel, LLC | (513) 677-0196 | www.devoldbr.com

HAVING AN ALS DIAGNOSIS CAN BE OVERWHELMING. WE'RE HERE TO HELP YOU THROUGH IT.

If you or someone you know has been diagnosed with ALS (Lou Gehrig's Disease), we want you to know you are not alone. You are probably feeling overwhelmed, but there is help available.

First Things First

If you haven't contacted ALS United Central & Southern Ohio, you should do that immediately. They are a team of people you are going to need in your corner.

ALS United Ohio

1170 Old Henderson Road, Suite 221
Columbus, OH 43220

Phone: (614) 273-2572 / Toll Free: (866) 273-2572

Email: ALSohio@ALSohio.org

Web: <https://alsohio.org>

ALS AND YOUR HOME

ALS affects people at differing rates, but most people develop similar physical issues at some point, which is challenging for them and their families. Some of those include:

- Muscles that control speech, swallowing, hands, arms, legs and feet begin to weaken.
- Tripping, dropping things.
- Abnormal fatigue of the arms and/or legs.
- Slurred speech, muscle cramps and twitches and/or uncontrollable periods of laughing or crying.

Not all people with ALS experience the same symptoms, or the same sequences or patterns of progression. However, progressive muscle weakness and paralysis are universally experienced.

This means walking independently will become a challenge and, eventually, impossible. When the breathing muscles become affected, people with the disease will need permanent ventilatory support to assist with breathing.

None of this is news anyone would want to get. However, it is important in the context of your home ... so you know what you'll be up against.

ALS AND YOUR HOME

People living with ALS typically have no way to easily get into their home, normally due to steps.

ALS patients will very quickly move from walking to using walkers to using wheelchairs or powerchairs.

None of those work well with stairs.

And that is just the beginning. Throughout your home are features or designs that will create obstacles for you and your family.

Typically, that means a lot of lifting, maneuvering and figuring out how to make your home work within the confines of your new reality.

The truth is makeshift accommodations can cause you or your caregiver harm.

That is why modifying your home is so important: you want to be safe and see to the safety of your family or caregivers.

What we try to focus on is creating a 'main floor' living situation, where everything a person needs is on a single level and accessible via at least one entrance.



Everything we do in your home is focused on making it safer and easier to use for everyone!

OPTIONS TO CONSIDER

RAMPS

Those with ALS or their Caregivers are going to need a way, without stairs, to easily get into their home.

Adding a ramp at the garage to the house door and/or at the front door is a way to solve this dilemma.



We will measure your space and suggest the best ramp length and slope to make this transition into your home as easy as possible.

We also recommend widening the door to 3' wide to accommodate the additional width of a wheelchair and this creates a doorway that is ADA compliant.

In addition, we have seen very successful results from adding an automated door opener for the newly widened door. Including one helps preserve independence, since a button push allows entry into the home, instead of a handle or knob.

OPTIONS TO CONSIDER

BATHROOMS

We do more bathroom remodeling for ALS patients than anything.

The reason we do so many bathroom remodels for ALS patients is that this particular room represents a host of physical challenges for both the person, their family or caregivers.



OPTIONS TO CONSIDER

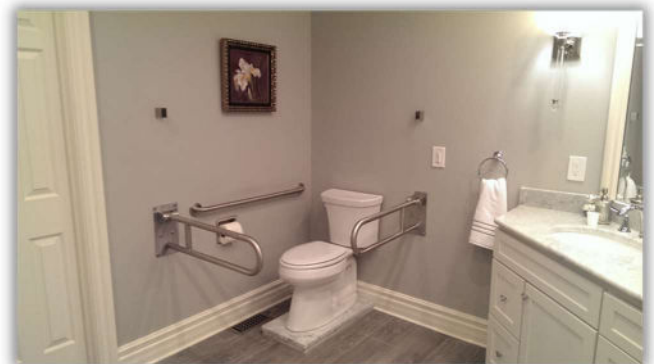
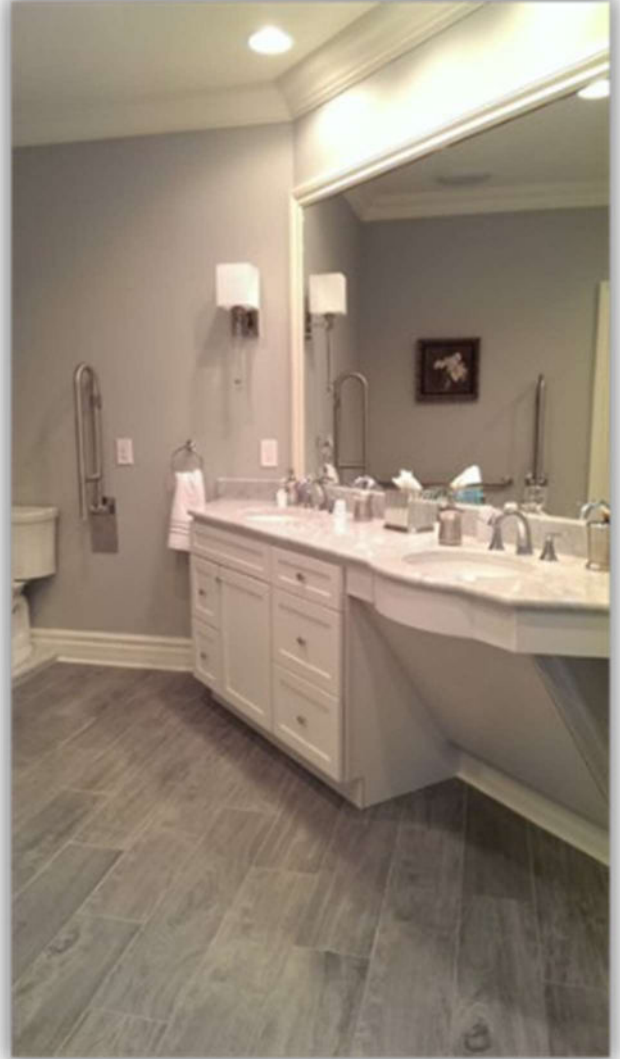
BATHROOMS (continued)

These projects generally include expanding the bathroom so a curbsless shower (with handheld showerhead) can be installed.

Adding roll-under sinks and higher toilets surrounded by grab bars.

This allows the person in a wheelchair to shower themselves or have help from a caregiver.

Making changes to the bathroom increases safety and helps make things much easier for everyone.



OPTIONS TO CONSIDER

KITCHENS

This is not considered essential. And just like bathrooms, kitchens aren't typically built for someone who is using a wheelchair.

There is generally no way to get to the stove, sink or counters. Much less, items in pantries, closets or cabinets.

In kitchens, we can add roll-under sinks, roll under cook tops with controls on the front and lowered microwaves.



OPTIONS TO CONSIDER

OTHER AREAS OF THE HOME

If you or a loved one has ALS, and you want to stay as independent for as long as you can, think about your daily living.

These questions will help you identify some of the areas that may be good candidates for home remodeling.



What do you need to do to take care of yourself?

Where do you need to go in your home?

What do you need access to?

Knowing the answer to these questions will help you make decisions about the right things to do in your home for you and your family.

Ultimately, it will help make your home easier to use, things you need easier to get to, and be much safer and more comfortable.

OPTIONS TO CONSIDER

OTHER AREAS OF THE HOME (continued)

- Installing elevators or vertical platform lifts to get from floor to floor.
- Overhead lifts help people transfer out of bed or from the bed to the bathroom on a track system that can be electric and operated by the client or caregiver.
- Removing carpet and putting in a hard surface such as hardwood or vinyl flooring.
- Widening doors and doorways.
- Removing walls, if necessary, to make it easier to negotiate the house.
- Automatic door openers.

Help is a phone call away.

If you or a family member has been diagnosed with ALS, we are the region's most experienced home remodeler for ALS.

We love putting our experience to work to help families affected by this terrible disease and help make your lives a little bit easier.

DEVOL DESIGN.BUILD.REMODEL, LLC IS COMITTED TO ALS FAMILIES.

We've leveraged our resources and time over the last decade to help families who are affected by ALS.

Here are some of the ways we support ALS patients:

- DeVol Design.Build.Remodel, LLC is a partner with ALS United Central & Southern Ohio to support ALS patients and their families.
- We're on our 9th year of having a team for the ALS Walk. We fundraise, donate and our entire company walks with family and friends.
- We volunteer with ALS patients and their families, teaching them about what they'll experience with their homes and changes they can make to increase everyone's quality of life.
- We are advocates of ALS United and the community of people they serve daily.
- We support many families each year through our home remodeling services, which make their homes easier for everyone to live in.
- We understand the emotional toll this disease has on the patient and the entire family. Our team has been trained through countless projects to understand what a major upheaval this has on your life.



(513) 677-0196

www.devoldbr.com

Serving the Greater Cincinnati area for over 24 years.



Proud to partner with:

